



Alwyn Infant School



Build Belonging

Show Kindness

Make Choices

OUR SCHOOL NEWS

Issue No. 37 | 4th July 2025

What has been happening?

Book Bags and Keyrings

The children are only allowed one small keyring on their book bag to help them identify it as their own. Please do not allow them to attach more than one, especially toy based ones as the bags do not fit in their trays and it prevents other trays from opening easily. It also causes disagreements and upsets among friendships groups.

Class Visits

The children have been thinking about moving up to their next class this week. They have visited their new classroom and met their new teachers and teaching assistants. It was an incredibly positive morning and the children were very excited, especially when they found out who their class grown ups were going to be.

We have uploaded transition booklets onto the school website that can be used to support your child during the summer holidays. They contain information about their new year group, class and adults. Read through them with your child during the summer holidays so they are prepared for September.

Open School Event- 10th July, please come along!

Thursday 10th July between 4pm and 5pm is Alwyn's open school event. This is a brilliant opportunity for families to come into school to celebrate the children's work displayed in their current classes and to also visit their new Alwyn classroom.

During this visit, you can meet their new Alwyn teacher, ask any questions you may have and see where the outside classroom door is. The children particularly love this event as they can be the confident school guide to 'show off' their school. This does not include visits to Courthouse School.

End of Year Reports

The children's school reports will be sent home on Friday 11th July in the their book bags. For some children, this will also include the outcomes of their statutory assessments; the Early Learning Goals for the Early Years Foundation Stage (Reception Year) and the phonics screening check (Year 1 and Year 2 retakes). After receiving the report, if you would like to discuss the contents, assessment outcomes or would like any further information, please contact the class teacher

Colour Run Tickets

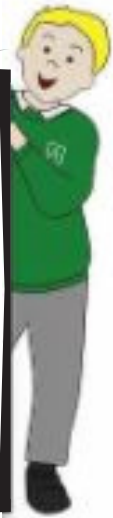
Remember to get your tickets for the colour run and BBQ taking place on 5th July. More details on the PTA page or just go right ahead and book your spot.

There will be the colour run (fun not competitive, over an obstacle course with safe paint throwing), a bar, BBQ, and games equipment available for free play. It's suitable for all the family. Runners and spectators welcome.

The Alwyn Aims

These are the rules we all try to follow:

- Use kind hands, feet and words
- Say how we feel
- Look and listen
- Always do our best



Remember to Order Lunches

All school dinners must be pre-ordered by 8am on the day, however, we are finding that if you leave the ordering close to the deadline, the system can throw out an error message. Please try to order the night or weekend before.

Please note that for the Summer term, on Tuesdays and Thursdays, the alternative options will be sandwiches with various fillings or a jacket potato with baked beans.

If your child does not have a packed lunch or you have not ordered a school lunch, they will be given a jacket potato with baked beans.

School lunches for infant age children are fully funded so parents do not pay for them. They are yummy!

Remember to send your child into school with a sunhat, water bottle and apply long lasting sun cream before school.

It is so hot and we do not want any children to become unwell or have to miss out in a sporty activity.



Look out for more school news on our [Alwyn facebook page](#) or new [Instagram account @alwyninfantschool](#). If you haven't already, give us a like and a follow.



Our Fabulous Parent Teacher Association

Remember as a member of the school community, you are automatically part of the Parent and Teacher Association (PTA).

They run brilliant events throughout the year but need your help. Please get in touch with them if you wish to take part or have some great ideas to share.

Family BBQ and Colour Run

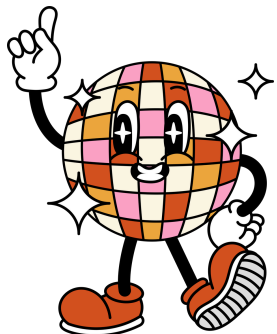
Get ready for a burst of colour and excitement at the PTA Summer Event!

Join us on Saturday, 5th July, for a Colour Run filled with fun, laughter, and plenty of vibrant energy. Whether you're sprinting, strolling, or simply cheering on the runners, it's a fantastic way to bring the community together.

And that's not all—enjoy a BBQ and bar, making it the perfect day out for the whole family. Delicious food, refreshing drinks, and great company—what more could you ask for?

Don't miss out on this incredible event! [Visit here](#) to get your tickets

As always, we can't run this amazing event without you! If you can spare some time to help, please [sign up here](#)—we'd be so grateful



🎉 Year 2 Leavers Disco - 17th July 🎉

Get ready to dance and celebrate our wonderful Year 2 pupils at their Leavers Disco on Wednesday, 17th July!

This special event is a chance for our Year 2 children to enjoy an afternoon of fun, music, and memories with their friends before they move on to their next adventure.

Each ticket comes with a goodie bag. [Click here](#) for a tickets.

🕒 Time: straight from school until 430pm

Auction

Ready to grab some summer steals? 🌟🔥 Our exciting auction is now live and runs until Sunday 6th July at 9pm! From unforgettable days out and wine tasting 🍷 to fitness fun 🏃 and summer holiday camp sessions—there's a perfect pick for everyone.

[Check out what's on offer and place your bids here](#) ➡



Clothes Collection - Join our Clothes Collection event on 7th July and give your old outfits a new lease on life. Drop off to the wooden gazebo in the Alwyn / Courthouse playground at drop off / pick up time. There's also a drop off point in the Courthouse Staff Car Park under the gazebo on Monday 8.30 - 9.15am at school drop off or 3 - 6.30pm.

Follow [the link](#) for more information about what we can collect.

Match funding We have some amazing parents who, through their work, have added to the funds we raise via Match funding; where their company match the amount raised on the event/stall they have helped run.

We have had support from Microsoft, Barclays and Heathrow. Does your company match fund?

<https://www.alwyncourthousepta.com/matchfunding>

What have Reception been learning this week?

This week in Reception we have been learning about farmyard animals and writing facts about them. We were very excited when the farm animals came to visit us on Wednesday. In Science we have been learning about bees, where they live, the importance of them and how we can look after them. This week we were able to visit our new year 1 class and spent some time with our new teacher. In maths we have been revisiting double numbers and recognising the 5 part in numbers between 6 and 9.

Ask me to sound out words with ear and air in them e.g. near and pair read the words dear and fair

Ask me to sound out and write farm animal names e.g. sheep, goat, chicken, horse, pig and cow

Ask me to tell you about the farm visit

Ask me to tell you about our year 1 teacher and class swap

Ask me to show you double numbers from 1 to 5

Next week Reception will be revising er and er in phonics and we will be consolidating our learning in Maths through stories such as Billy's Bucket and making comparisons using words e.g. more than and less than.

What have Year 1 been learning this week?

We had an incredibly busy and exciting week in Year 1. The children had a chance to go into their new class and meet their new teacher. In maths, we've been learning about position and direction and using language such as half, quarter, three-quarter and full turn.

In English, we've continued with our Katie in London story and the children are really enjoying learning about the wonderful London landmarks. In science, we've been talking about how our food grows and where it comes from and this has led to children tasting new fruits and making a fruit salad. The children really enjoyed tasting fruit that they may have never tasted and choosing their favourites for their fruit salads. Passion fruit came out as one of their favourite fruits, yummy!

Ask me to show you a quarter turn, half turn and three quarter turn

Ask me share with you the fruits that I enjoyed tasting

Ask me about the different ways that people might travel around London

Ask me to name the London landmark that you'd be able to see the changing of the guard

Next week we will be showcasing what we have learnt in year 1 over the course of the year and visiting our new teachers with our parents during our open evening.

KEY DATES!

School Year 2024-2025

Summer Term 6, 2024-2025

7th July

PTA Clothes collection

10th July, 4-5pm

Grown ups invited to visit classes, new and current in Alwyn only

11th July

School reports sent home

15th July, 9am

Coffee morning for parents/carers of children with additional needs

17th July, 3.30

PTA Disco for Year 2. You will need to buy a ticket.

22nd July, 9.30am

Year 2 Leavers' Concert to their parents/carers

23rd July

Last day of school, early finish at 1.30pm

Have a wonderful summer break

Children return back to school on Thursday 4th September 2025

What have Year 2 been learning this week?

Year 2 have had a very creative week with our vehicle project! We started the week by investigating different types of vehicles; leisure vehicles, commuting vehicles, passenger vehicles and commercial vehicles. We then investigated different types of axles; either a moving axle with a fixed wheel or a fixed axle with moving wheels. The next step was designing, making sure we had chosen an axle and considered the size of boxes we had available. Finally it was construction time! We used masking tape to fix boxes together and carefully made our axles using cotton reels, elastic bands and dowels.

Ask me what the difference between a fixed and moving axle is.

Ask me to describe to you how I constructed my vehicle.

Ask me to tell you what happens in every Mr Benn story.

Ask me to tell you what the problem is in the Mr Benn Caveman story.

Ask me to give you 3 ways of making 20 with 3 different numbers- don't forget to use your number bonds to 10.

Next week we will be looking at a day in the life of a Kenyan child.

Congratulations!

Children are enjoying Golden Book Assembly in Year 1 and 2.

In Little Alwyn, they love to have their special stickers and certificate.

A huge '**well done**' to all the children who were in the Golden Book for their achievements this week. **We are very proud of you!**

KEY DATES!

School Year 2024-2025

Summer Term 6, 2024-2025

7th July

PTA Clothes collection

10th July, 4-5pm

Grown ups invited to visit classes, new and current in Alwyn only

11th July

School reports sent home

15th July, 9am

Coffee morning for parents/carers of children with additional needs

17th July, 3.30

PTA Disco for Year 2. You will need to buy a ticket.

22nd July, 9.30am

Year 2 Leavers' Concert to their parents/carers

23rd July

Last day of school, early finish at 1.30pm

Have a wonderful summer break

Children return back to school on

Thursday 4th September 2025



achieving
for children

Are you a parent, carer or young person living in RBWM?

We want to understand what you know about the wellbeing services and support you can get in RBWM.

We will use the information to improve how these services are promoted across the borough.

We would very much appreciate you taking a few minutes to complete **the health questionnaire**. You can also access it by scanning the **QR code**.

Entrants can also enter a prize draw to win an Amazon voucher.



www.rbwm.gov.uk



Royal Borough
of Windsor &
Maidenhead

ALWAYS FOLLOW THE WATER SAFETY CODE



ROYAL
LIFE SAVING
SOCIETY UK

Whenever you are around water:

STOP AND THINK

Take time to assess
your surroundings.
Look for the
dangers and
always research
local signs and advice.



STAY TOGETHER

When around water always go
with friends or family.
Swim at a lifeguarded venue.



In an emergency:

CALL 999

If you are at the
coast, call 999 and
ask for the
Coastguard.
Don't enter
the water to
rescue.



FLOAT

Fall in or become
tired - stay calm, float
on your back and call
for help.
Throw something that
floats to somebody that
has fallen in.



Enjoy Water **Safely**

Learn basic lifesaving and CPR skills.
Visit www.rlss.org.uk



WATER SAFETY CODE



STOP AND THINK



STAY TOGETHER



CALL 999



FLOAT

School Day

Year Group	Reception	Year 1	Year 2
Start Lunch Finish →	8.45am 11.45pm - 12.45pm 3.15pm →	8.50am 12pm - 1pm 3.20pm →	8.50am 12.20pm - 1.20pm 3.20pm →

The School Gates

The Alwyn and Courthouse gates open at 8.40am until 8.55am and 3.10pm until 3.35pm

The opening times allow movement between our two schools and provide different points of access which should help with traffic and parking in our area.

The gate opening times are different from the time your child is required to be in school.

The Importance of Being on Time

Reception children need to be in school at 8.45am.

Year 1 and 2 children need to be in school at 8.50am.

The classroom doors will open at these times and close as soon as the last child in the line enters the classroom; this usually takes less than 3 minutes. Any child arriving after the classroom door is shut, will be marked as late. Knocking on the classroom door once it is closed is disruptive to the children as their teacher is having to keep opening the door instead of settling their class for the morning.

Please be on time every morning. It can be worrying for a child to enter a classroom late especially when their classmates are sat on the carpet ready to learn. All children should have come into school, put their belongings in the cloakroom, their book bag in their drawer and their water bottle in the tray and have been registered before 9am each morning.

Attendance Matters

Being in school every day is extremely important for all children in order to receive the best possible start to their learning. Your child's attendance is vital to a successful education, as this is the foundation for lifelong learning. Lessons are planned in sequences and if a child misses a part of this sequence, they are at a disadvantage when it comes to committing that learning to long term memory.

If your child is slightly under the weather, but well enough to come into school, send them in and mention it to the class teacher. They will keep an eye on your child and phone you if there are any concerns.

Reason for absence

Please let the office know the specific reason for your child's absence rather than feeling unwell or ill. This helps us monitor any small outbreaks of similar virus' and supports the recording of absence.

Medical Appointments

If you have a medical appointment during the school day, inform the school before the appointment and provide a GP/Hospital appointment card or letter.

Leave Requests

Holidays during term time will not be authorised. Any other exceptional circumstances will require supporting evidence that shows the child has to attend something that results in missed school days.

Fixed Penalty Notices (fines) may be triggered if your child misses 5 consecutive days of school or 10 sessions in 10 weeks. A session means a morning or afternoon, not a day.

Please ensure that you make all reasonable efforts to send your child into school.

Penalty Notice Changes

With the introduction of the new National Framework for Penalty Notices on 19 August 2024 there are significant changes in the way that Penalty Notices are to be issued and an increase in the charges associated with them. These are nationwide changes implemented for consistency across all Local Authorities.

Term Time Leave is only allowed in exceptional circumstances communicated in advance with evidence provided as soon as possible to the Headteacher.

First Offence

For the first time a Penalty Notice is issued for unauthorised term time leave or irregular attendance the amount will be;

-£160 per parent per child paid within 28 days.

-Reduced to £80 per parent if paid within 21 days.



Please ensure you communicate all absences for your child to school.

Second Offence

Within 3 years of the first offence.

The second time a Penalty Notice is issued for unauthorised term time leave or irregular attendance the amount will be;

-£160 per parent per child paid within 28 days.

-No reduction for early payment.

Third Offence Onwards – Within 3 years of the first offence

The third time an offence is committed for unauthorised term time leave or irregular attendance a Penalty Notice will not be issued and the case will be presented straight to the magistrates court. Fines can be around £2500 per parent, per child. Cases found to be guilty in the magistrate's court can show as a criminal record.

Notices to Improve

A Notice to Improve is a final opportunity for a parent to engage in support and improve before a penalty notice is issued. If the national threshold has been met and support is appropriate but offers of support have not been engaged with by the parent or guardian or have not worked, a Notice to Improve should usually be sent to give parents or guardians a final chance to engage in support. A Notice to Improve does not need to be issued in cases where support is not appropriate and an authorised officer can choose not to issue one in any case, including cases where support is appropriate but they do not expect a Notice to Improve would have any behavioural impact (because the parent has already received one for a similar offence).

If sufficient improvement is not made following the service of a Notice to Improve, a penalty notice may be issued either during or at the end of the designated time period.

Don't forget.

Penalty Notices are issued Per Parent, Per Child.

For example 3 siblings absent would result in each parent receiving 3 fines. This could amount to £960

DfE Blog for Parents

<https://educationhub.blog.gov.uk/2024/02/29/fines-for-parents-for-taking-children-out-of-school-what-you-need-to-know/>



10 sessions in 10 weeks

Penalty Notices will be considered for any 10 sessions of unauthorised absence in 10 weeks. **5 Consecutive days** of term time leave can trigger a Penalty Notice

[Link](#) to the attendance page on the Alwyn website.



Providing Children's Services for the Royal Borough of Windsor and Maidenhead

Attendance Ladder

How close is your child to reaching the top?



For every day your child is absent from school, over 6 hours of instructional time is lost.

PARKING RESOLUTION

Driving, Parking and Vehicles in Mulberry Walk

Please think about our neighbours and school community, especially as one of our school values is kindness. Drive and park carefully and considerately on the roads surrounding the school at all times.

The road gets very busy at drop off and collection times. To help with this, we have an unofficial one way system that keep cars moving safely. Please reduce your speed and drive slowly around the one-way system. This is crucial as there are very young children walking along the pavements who may not be seen easily while driving, especially in these grey days.

We have good relationships with our neighbours but that can only be maintained with your help. Please do not block their driveways when parking and remain polite if they ask you to move. Any area with block paving is for the residents of the road and not for school parking or access.

Please do not park on the bends of the road or directly opposite another car as this can stop the flow of traffic and make it difficult for other drivers to pass.

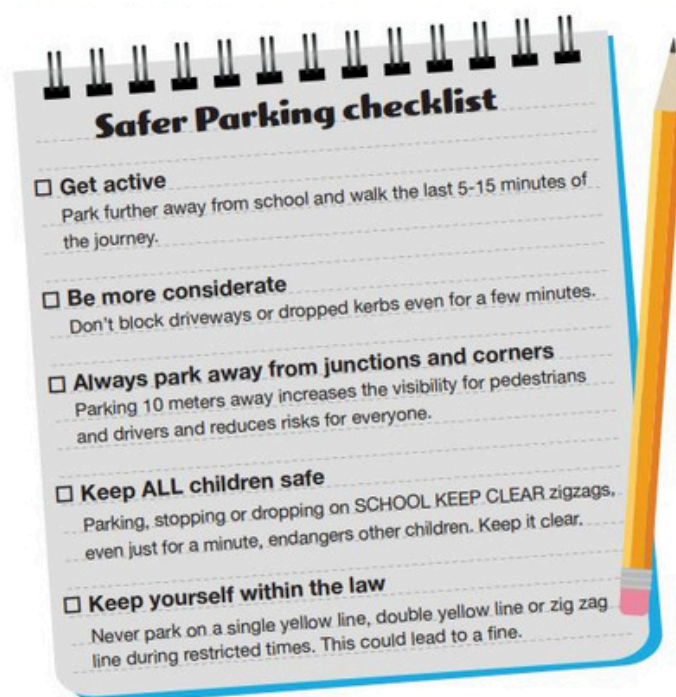
Do not mount the curb as our children and their siblings are very little and not always easy to see.

To ease congestion, please explore other options:

- If you are able to walk or cycle to school this would help.
- Consider parking further away, such as by Courthouse Junior School, where there are more roads to park along safely and they tend to be less congested.
- A short walk can make a significant difference in reducing traffic and ensuring safety and you can access Alwyn by walking through Courthouse as the gate opening times are the same.

Recently we've had a few reports of members of our school community driving along the pavement, on the bend, at speed resulting in near misses as well as some aggressive behaviours when they have been reminded of our parking etiquette.

Aggressive driving and behaviours put us all at risk and should be reported by calling 101.



Share the roads, Share the responsibility



Community Pages: What is happening in our local area?

Community Events Disclaimer: Please note that the events listed are organised by external parties and are not endorsed or recommended by Alwyn Infant School. We provide this information as a courtesy to our community. We advise families to exercise their own discretion and judgement when participating in any events or activities.

There is a local campaign to raise money for a new skatepark in Kidwells Park. The council have allocated some money but there is a crowdfunder campaign to bridge the funding gap.
[Click here](#) for more details.

**SCHOOL DAYS DIRECT**
The Uniform Specialist

online gift voucher

£5 off when you spend £50

Code: **BTS-50**

£10 off when you spend £100

Code: **BTS-100**

Valid between 01.06.25 - 31.08.25

Terms & Conditions:
Offer can only be used online at www.schooldaysdirect.co.uk
One-time use per customer.
Cannot be redeemed for cash.
Cannot be used in conjunction with any other offer/discount.

Here's your free copy of the UK's largest parenting title - Enjoy!

FamilyFirst

FREE | SUMMER 2025

Proud to partner with **netmums**

Netmums' experts
on smartphones and preparing for secondary school

SUN SAFETY
FROM THE BRITISH SKIN FOUNDATION

KIDS EAT FOR FREE THIS SUMMER!
Plan a summer day out with TripAdvisor's Top UK Destinations





ASHLEY JAMES

on motherhood, body confidence and empowering the next generation of girls


Clarks Kellogg's

Building a happier, healthier family lifestyle




GEMS

Autism & ADHD Support Service
East Berkshire

**01753 373 244 / 0800 999 1342**
weekdays 9am to 5pm

<https://www.gems4health.com>

gems.4health@nhs.net

GEMS is for children and young people who are diagnosed with, or who may have, autism and/or attention deficit hyperactivity disorder (ADHD). The service also supports parents and carers and is open to anyone living in Slough, Royal Borough of Windsor and Maidenhead or Bracknell Forest.

UPCOMING WORKSHOPS AND COURSES




Managing Anxiety - Tuesday 8th July
10 to 12noon

Sensory Processing - Wednesday 9th July
7 - 8.30pm

Empowering Calm - Tuesday 15th July
10am to 12noon

Navigating School Avoidance - Tuesday 16th September - 10am to 12noon

Visit our website to book your space - www.Gems4Health.com





PARALLEL WINDSOR

6TH JULY 2025

WINDSOR GREAT PARK 11AM TO 5PM

FESTIVAL OF INCLUSIVITY
THE NATION'S FAVOURITE
FULLY ACCESSIBLE FAMILY DAY OUT
BURSTING WITH INCLUSIVE EXPERIENCES & ENTERTAINMENT

ANIMAL KINGDOM • ARTS & CRAFTS • COOKERY • DANCE
INCLUSIVE SPORT • MUSIC • PICNIC • SENSORY ZONE
STREET FOOD • STORYTELLING • QUIET SPACE
YOGA & WELLBEING

CHALLENGE EVENTS
WALK, RUN OR ROLL WITH NO CUT OFF TIMES
MOBILITY AIDS & ASSISTANCE ANIMALS WELCOME
10K • 5K • 1K • 100M • SUPERSSENSORY MEDAL • T-SHIRT • GOODY BAG
START TOGETHER. FINISH WHENEVER.

THE GREATEST DANCER CHALLENGE
MASS PARTICIPATION DANCE FOR EVERYONE TO SHOW OFF THEIR BEST MOVES

15% OFF TICKETS WITH PROMO CODE SCHOOL15 (valid until 31st May)

WWW.PARALLELLIFESTYLE.COM

supported by  

@ParallelGlobal
  



Summer Holiday Activities

Summer Holiday Activities Disclaimer: Please note that the events listed are organised by external parties and are not endorsed or recommended by Alwyn Infant School. We provide this information as a courtesy to our community. We advise families to exercise their own discretion and judgement when participating in any events or activities.

FOOTBALL CAMP

Ofsted Registered

let them play! Football

BOOK NOW

SUMMER HOLIDAY

Price + Offers

£25 per day

Code: SUM25
15% off
Expires 29th June

Sibling discount:
10% off
Not applicable with other discounts

Venues

Reading:
Calcot Junior School

Newbury:
Winchcombe School

Maidenhead:
Alwyn Infant School

Age

5-12-year-olds

Dates + Times

Friday 25th July – Friday 29th August

Standard day: 9am-3pm
Extended days available

www.mnrcoaching.com

MNR COACHING
@MNRCoaching Limited
@MNRCoaching
@MNRCoaching_

WE ACCEPT CHILDCARE VOUCHERS! LUNCHES AVAILABLE
HAF SPACES AVAILABLE

For Holiday Camp Enquiries- Email holidaycamps@mnrcoaching.com

MULTI-ACTIVITY CAMP

Ofsted Registered

let them play!

BOOK NOW

SUMMER HOLIDAY

OVER 35 ACTIVITIES!

Price + Offers

£25 per day

Code: SUM25
15% off
Expires 29th June

Sibling discount:
10% off
Not applicable with other discounts

Venues

Reading:
Calcot Junior School

Newbury:
Winchcombe School

Maidenhead:
Alwyn Infant School

Age

5-12-year-olds

Dates + Times

Friday 25th July – Friday 29th August

Standard day: 9am-3pm
Extended days available

www.mnrcoaching.com

MNR COACHING
@MNRCoaching Limited
@MNRCoaching
@MNRCoaching_

WE ACCEPT CHILDCARE VOUCHERS! LUNCHES AVAILABLE
HAF SPACES AVAILABLE

For Holiday Camp Enquiries- Email holidaycamps@mnrcoaching.com

3 DAYS OF DANCE, FITNESS & CREATIVITY

SUMMER MOVES

AGE 5-11 YRS | NEWFIELD PLACE MARLOW

JDFD

No matter their experience, every child will feel confident, inspired & supported by our caring & enthusiastic instructors.

What will we do?
Dance (Street, contemporary) Musical Theatre & Drama, Fitness & Yoga, Art & Costume Making

When?
Monday 28th July to Wednesday 30th July 2025
9.30 – 3.30 (single days available)

info@janedouglass.co.uk | www.janedouglass.com

"My girls started Samurai Kickboxing just over a year ago, I couldn't have imagined what a massive part of their lives it would become. My two quiet, shy & lacking self-confidence girls have transformed into strong, confident young females with awesome kickboxing skills!"

SAMURAI Kickboxing

Free Holiday Camp & Hot Meals with the FUEL Programme!

Thanks to the RBWM FUEL programme, we're able to offer **FREE** places at our Samurai Kickboxing Holiday Camp – including a **hot lunch Monday to Thursday** every week of camp for children who:

- Receive benefit-related free school meals
- Attend school within the RBWM Council area

This amazing support means eligible families can enjoy active, enriching holiday fun at **no cost!**

FUEL Bookings open Monday 23rd June

Hot Lunch Option for All!

Not eligible for FUEL? No problem!
All students can enjoy a **tasty hot lunch** during camp for just **£6.50 per child, per day.**

Early Bird Offers

Ends JUNE 30th!

- Early Bird – Just £27/day! Save £5 per day!
- Full Week Saver – £130 for 5 days! Save £30!

Email info@samuraikickboxing.com to take advantage of the Early Bird Offer

Open to all levels – beginners welcome

Fun, high-energy sessions with **Grading every Friday** (Grading fee applies if not attended for the full week)

Build skills, confidence and friendships!

Location: Althwood C of E School, Maidenhead

Dates: August 4th – 22nd (3 weeks)

Time: 9am – 3pm daily

Standard Price: £32/day

More info available on our [website](http://www.samuraikickboxing.com)

info@samuraikickboxing.com
t: 07828 534817
www.samuraikickboxing.com

Summer Holiday Activities cont.....

Summer Holiday Activities Disclaimer: Please note that the events listed are organised by external parties and are not endorsed or recommended by Alwyn Infant School. We provide this information as a courtesy to our community. We advise families to exercise their own discretion and judgement when participating in any events or activities.

SUMMER CAMPS with MAIDENHEAD UNITED FC IN THE COMMUNITY



Our popular Summer Camps are now available to book, use the discount code shown for 20% off - but must be booked BEFORE FRIDAY 13th JUNE...

The Cage at Maidenhead United FC - MUFC25

Cox Green Leisure Centre - COXGREEN25

Dedworth Middle School - DEDWORTH25

Holy Trinity Sunningdale - HOLYTRINITY25

BOOK ONLINE THROUGH OUR WEBSITE
WWW.MAIDENHEADUNITEDFC.ORG OR THE QR
CODES AND TYPE THE CAMP LOCATION
FOR FURTHER DETAILS CONTACT:
MARK.NISBET@MAIDENHEADUNITEDFC.ORG

BOOK
HERE



BOOK
HERE



UNITED AS ONE

28TH JULY - 2ND AUGUST 2025

BRAYWICK NATURE CENTRE, SL6 1UU



**SPEAKERS - PANEL DISCUSSIONS - FAMILY
ACTIVITIES - NATURE CRAFTS - LIVE MUSIC -
FOOD - BAR**

KEEP UPDATED HERE



MORE SESSIONS TO BE ANNOUNCED SOON

SUMMER TOUCH RUGBY CAMP



TUE 19-WED 20 AUG // // // //
AGES 5-17 // // // //

*SKILLS *TACTICS *GAMES *FUN

Cost: £35 for 1 day or £60 for 2 days. Contact us for a 10% sibling discount.

Timings: 09:30-15:00

Venue: Maidenhead RFC, SL6 1BN



REGISTER

To register your Junior or for more details please email
sammie@in2touch.com

