



Alwyn Infant School



Build Belonging

Show Kindness

Make Good Choices

OUR SCHOOL NEWS

Issue No. 18 | 26th January 2024

It was music week, last week!

Last week was music week. The week ended with a visit from a guitar band, but a little late to have a mention in the newsletter.

A Rock Band, Mrs Kyle

On Friday afternoon, we had three musicians visit our school. They played lots of songs as a band and we even sang along to some that we recognised from the Disney movies. Some of us had the chance to play some percussion instruments alongside them and we all enjoyed clapping along. They talked about the instruments that they were playing and it was really interesting to see a 'rock' band set up. They had microphones, speakers and electric guitars! What a treat!

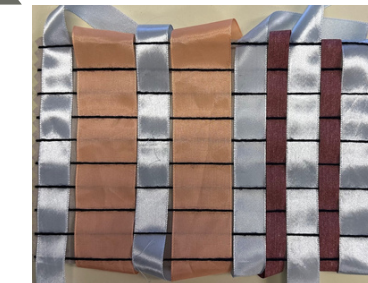
Visiting Pianist- such talent!

We were very lucky to be visited by more musicians on Monday morning! Two pianists from Courthouse came to Alwyn to play for us. They impressed us with their fantastic playing and bravery in front of such a big audience. We also discovered that we have our own pianist here at Alwyn. A Year 2 pupil also played for us and told us that she had been playing since she was 4! Amazing. Thank you to all three pianists, we hope to hear you play again soon. What a brilliant way to start the week!

Weaving in Year 1

The children in Year 1 have been learning a weaving technique in Art. They practised with paper and are now using material. We think they are amazing.

They have also been growing beans in science. Look how well they are growing!



The Alwyn Aims

These are the rules we all try to follow:

- Use kind hands, feet and words
- Say how we feel
- Look and listen
- Always do our best



Remember to Order Lunches

The deadline for ordering lunches is 8am on the day.

Please review the menu with your child to check they know what has been chosen for them each day and that they like it. Choose peas or beans, if asked.

Lunches for infant age children are fully funded so parents do not pay for them. If your child does not have a packed lunch or ordered a school lunch, they will be given a jacket potato with baked beans.

Please drive and park sensibly!

Please drive slowly along Mulberry Walk and be aware of the pedestrians.

Park sensibly; not blocking driveways or stopping on the road bends.

If using a disabled bay, please ensure your blue badge is clearly displayed.

Thank you



Look out for more school news on our [Alwyn facebook page](#).

The School Day

Year Group	Reception	Year 1	Year 2
Start Lunch Finish	8.45am 12.00am - 12.45pm 3.15pm	8.50am 12pm - 1pm 3.20pm	8.50am 12.20pm - 1.20pm 3.20pm
→	→	→	→

The School Gates

Thank you for supporting the new gate opening and closing times:
8.40am - 9.00am and 3.10pm - 3.35pm

The opening times allow movement between our two schools and provide different points of access which should help with traffic and parking in our area.

The gate opening times are different from the time your child is required to be in school.

The Importance of Being on Time

Reception children need to be in school at 8.45am.

Year 1 and 2 children need to be in school at 8.50am.

The classroom doors will open at these times and close as soon as the last child in the line enters the classroom; this usually takes less than 3 minutes. Any child arriving after the classroom door is shut, will be marked as late. Knocking on the classroom door once it is closed is disruptive to the children as their teacher is having to keep opening the door instead of settling their class for the morning. Please be on time every morning.

It can be worrying for a child to enter a classroom late especially when their classmates are sat on the carpet ready to learn. All children should have come into school, put their belongings in the cloakroom,, their book bag in their drawer and their water bottle in the tray and have been registered before 9am each morning.

Attendance Matters

Being in school every day is extremely important for all children in order to receive the best possible start to their learning. Your child's attendance is vital to a successful education, as this is the foundation for lifelong learning. Lessons are planned in sequences and if a child misses a part of this sequence, they are at a disadvantage when it comes to committing that learning to long term memory.

If your child is slightly under the weather, but well enough to come into school, send them in and mention it to the class teacher. They will keep an eye on your child and phone you if there are any concerns.

Reason for absence

Please let the office know the specific reason for your child's absence rather than feeling unwell or ill. This helps us monitor any small outbreaks of similar virus' and supports the recording of absence.

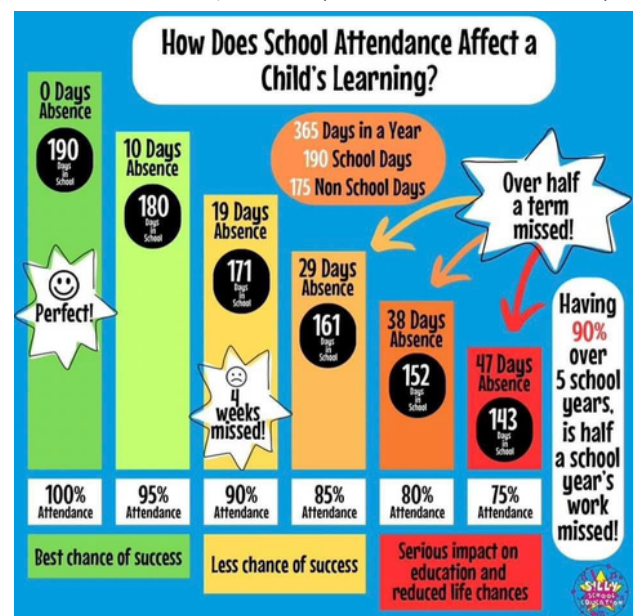
Medical Appointments

If you have a medical appointment during the school day, inform the school before the appointment and provide a GP/Hospital appointment card or letter.

Holidays during Term Time

We will not authorise requests for holidays during term time. **Fixed Penalty Notices can be issued to parents who take their children out of school for holidays.**

Please ensure that you make all reasonable efforts to send your child into school.



Ideas for Learning Chats

What have Reception been learning?

Reception have had a busy week learning two new sounds in Phonics - /le/ and /ss/. In Maths we have been weighing and measuring and we have begun to learn about Chinese New Year in R.E. This week our PSHE has been thinking about being safe inside and outside.

Ask me how to write 'fuss' and 'mess'.

Ask me to tell you which is heavier when you give me two things.

Ask me to tell you something about Chinese New Year.

Ask me to retell the story of the Little Red Hen.

Next week we will be learning some more about the Chinese New Year as well as continuing our Phonics with /j/ and /v/. In Maths we move up to numbers 6, 7 and 8, looking at the composition of these numbers and finding one more and one less.

What have Year 1 been learning this week, Miss Harris?

Year one have been very excited watching their broad bean plants begin to grow! We have continued our learning about different animal groups and this week; we learnt about fish and amphibians. In art, we had a go at weaving using a loom board and strips of fabric. We started our new story of the Gingerbread Man. We have talked about what many traditional tales have in common and have been practising using 'and' to join two sentences together.

Ask me to read the words: prince, choice, force, head, ready, weather

Ask me to tell you 2 numbers greater than 15.

Ask me to tell you 2 numbers less than 17.

Ask me to retell you the story of the Gingerbread Man

Ask me to tell you what gills are?

Ask me to name an amphibian?

Ask me, what has happened to my bean?

Ask me what the internet is?

Ask me how can I keep safe on the internet?

Next week where we will be baking and decorating our own gingerbread men in DT!

What have Year 2 been learning this week?

In English we read the story of Traction Man by Mini Grey. We will be writing our own superhero story with Alwyn as our setting. We have had great fun creating our own villainous everyday object found around the school. Continuing with our superhero theme, Mrs Harding's son, who is an amazing artist, came to our classes to discuss ideas for a superhero. He is going to create our own class superhero which we are very excited about. In maths we have started a new topic on multiplication and division. We enjoyed making arrays with pegs on a pegboard to reinforce our understanding of groups and rows. In history we have been thinking about the work of engineers, particularly Brunel and his influence on the railways. I wonder what he would make of our railway system now!

Ask me who my villain is in my Traction Man story.

Ask me to describe my villain using adjectives.

Ask me to show you the multiplication sign.

Ask me what the multiplication sentence is for 3 groups of 5.

Ask me to find an object that you can squash or bend or is rigid.

Next week we will be learning more about the engineer Brunel and his contribution to worldwide travel.

KEY DATES!

5th-9th February

Book Week

-Book Fair after school

-Author workshops (Yr1 & 2)

8th February

Dance Festival (Pine & Maple)

9th February

End of Term

12th - 16th February

School closed for half term

Half term book Challenge

19th February

Children return to school

19th - 23rd February

Art/DT Week

Art workshops

26th February

Internet Safety Day

7th March

World Book Day- dress as a book character

12th & 14th March

Parents'/Carers' consultations

28th March

Last day of Term

29th March-12th April

School closed for Easter holidays

15th April

INSET day

16th April

Children return to school

Congratulations!

Children are enjoying Golden Book Assembly in Year 1 and 2. In Little Alwyn, they love to have their special sticker.

A huge 'well done' to all the children who were in the Golden Book for their achievements this week. **We are very proud of you!**

Community Pages



JANUARY WORKSHOPS

Craft activities in Eton's Natural History Museum

Come to our winter-inspired kids workshops! Drop in and let your little ones unleash their creativity

Sundays 2:30-5pm | Drop-in anytime | Free Admission | Natural History Museum | South Meadow Lane | Windsor, SL4 6ES

Sunday 7 th January	Owls
Sunday 14 th January	Snowflakes
Sunday 21 st January	Trees
Sunday 28 th January	Snowmen

@etoncollegemuseums

Inclusion Summit



We are extremely pleased to announce our fifth Royal Borough of Windsor and Maidenhead Inclusion Summit. This event has been co-produced between SEND Voices RBWM, Achieving for Children, the Independent Advice and Support Service, Children and Young People's Integrated Therapy Service and schools.

It will be a great opportunity for all parents and carers, as well as other key stakeholders, to share information and celebrate developments in SEND across the borough.

This event will inform, engage and inspire how we are all working together as a positive beacon of inclusion for children and young people (0 to 25 years) with special educational needs and disabilities.

There will be a selection of workshops to attend and a bustling marketplace.

This face-to-face event will be held on:
Wednesday 7 February, 2024
Royal Windsor Racecourse

- 9.15am Registration and browse the marketplace
- 10am Introduction
- 10.15am Presentations
- 11.15am Break and browse the marketplace
- 11.45am Workshops
- 1.10pm Summary of the day and performance from Manor Green School

To register your interest click on this [link](#).
 If you are interested in having a stall, please email: inclusionsummit@achievingforchildren.org.uk




Parent and Carer Autism Online support session

Friday 2nd February 10am - 11.15am

Join our online session to:

- learn and discuss, how to have meaningful communication with your child
- how to support your child with communicating with other people

How to communicate with your **Autistic** child




Sign Up Today!

Available for families residing in, or have a registered GP in East Berkshire

To book your place contact GEMS: Gems.4Health@nhs.net 0800 999 1342

Please provide your full name, email address, phone number, child's pathway (suspected/waiting assessment/diagnosed) and local authority



Bear cubs

Ages 5 to 10

First and third Friday of the month - 4pm to 5pm

- January 5th - Design your own superhero - Online
- January 19th - Bingo - Bracknell - St Margaret Cuthbert RC Primary School
- February 2nd - Crafting - Slough
- February 16th - Big on Bouncing - Slough
- March 1st - Sports Day - Maidenhead - Woodlands Park Primary School
- March 15th - Easter Biscuit Decorating - Heathfield School - Ascot

*Please note activities may be subject to change

Registration: Criteria:
 0800 999 1342 Children with or being referred to GMS and/or autism and being in East Berkshire

For more information: Call 0800 999 1342 or visit www.Gems4Health.co.uk

As a parent/carer you may feel that your child would benefit by joining a social session.

Sessions encourage Participation, Confidence and Fun!

For more information, please contact the GEMS team on: gems.4health@nhs.net or 0800 999 1342. You can also [click here to book a place](#).

Please note that bookings will close when sessions are fully booked / day before a session

Fun activities providing an opportunity to make friends in an understanding environment and a chance to develop social skills and self esteem. We provide a mixture of online sessions and sessions held in the local community

Activities are held on 1st & 3rd Friday of every month.

Please note for the Big on Bouncing Event on Friday 16th February there is a small charge.

School Keep Clear



**NO STOPPING
NO PARKING
NO WAITING**

Why do I have to leave it clear?

For safety - to ensure clear sight lines for both motorists and children, as well as for other road users, outside schools. They provide a clear area in which children and adults can cross more safely.

Am I okay just to pick up on the zig-zag markings if I am only there for a second?

Under no circumstance should you stop on zig-zag markings at any time, even just for a second. A stationary car can prevent a driver seeing a child crossing the road.

But it's raining, can I just drop off?

Don't be pressured by bad weather into parking on the Keep Clear zig-zags.

Rule 238 of the Highway Code states;

"You **MUST NOT** wait or park, or stop to set down and pick up passengers, on school entrance markings when upright signs indicate a prohibition of stopping."

Better a wet coat than parking illegally which could result in a fine.

Keep the Zig-Zags clear- No excuses!



PAVEMENTS ARE FOR PEOPLE

Would you like it if YOUR part of the road was blocked?

Obstructing the pavement can cause serious problems for pedestrians, people with disabilities, older members of the community and those with small children and pushchairs.

Rule 242 of the Highway Code states; "You **MUST NOT** leave your vehicle in a dangerous position or causing an unnecessary obstruction of the road."

You could be fined and your vehicle removed.



NEW PARKING RESOLUTION

Safer Parking checklist

- Get active**
Park further away from school and walk the last 5-15 minutes of the journey.
- Be more considerate**
Don't block driveways or dropped kerbs even for a few minutes.
- Always park away from junctions and corners**
Parking 10 meters away increases the visibility for pedestrians and drivers and reduces risks for everyone.
- Keep ALL children safe**
Parking, stopping or dropping on SCHOOL KEEP CLEAR zigzags, even just for a minute, endangers other children. Keep it clear.
- Keep yourself within the law**
Never park on a single yellow line, double yellow line or zig zag line during restricted times. This could lead to a fine.

Share the roads, Share the responsibility



FEBRUARY TOUCH RUGBY CAMP



12-13 FEB // // // //
AGES 5-17 // // // //



Hosted by Regional and National Qualified Touch Rugby Coaches.

Cost:
£35 for 1 day (9.30am - 3:30pm) or £60 for 2 days. 10% sibling discount.

Venue:
Maidenhead RFC, Braywick Park,
Braywick Road, Maidenhead SL6 1BN

REGISTER

To register your junior or for more information, please email sammie@in2touch.com



Camps in association with the Wildcats Region
@wildcatstouch
wildcatsjuniorstouch@gmail.com



It all starts with...



We all play at:
Boyne Hill Cricket Club +
Session dates:
Saturday 11th May- Saturday 29th June +
Session timings:
10:30am-11:30am +
Contact:
Jack Spencer-Jones- 07595463584,
jackspencerjones@yahoo.co.uk -



Sign up today at
allstarscricket.co.uk