



# Alwyn Infant School



Build Belonging

Show Kindness

Make Choices

## OUR SCHOOL NEWS

Issue No. 29 | 2nd May 2025

### What has been happening?

It has been a beautiful sunny week and the children have enjoyed opportunities to be outside. As we are in the summer term and hopefully looking forward to blue skies and sunshine, please make sure your child comes into school everyday with a named water bottle and sun hat. We discourage sunglasses as they tend to get lost or broken.



On sunny days, please put a long lasting sunscreen on your child before school as this should last them throughout their day. Do not send the sunscreen into school, in book bags, as the children are often tempted to share it with their friends and it can lead to allergies being triggered. It would also be helpful to stop your child bringing in lip balms to prevent any sharing which is not very hygienic.

### IT Workshops with the Company 3

This week, the children took part in an IT workshop delivered by a representative from the 3 network. Year 1 created a card. The children took pictures of each other, uploaded them to the card and added a background, text and emojis. They had great fun exploring the app and using their IT skills.

Year 2 created their own cartoon. They used an app on iPads to create a three part story. They could choose their setting from choices like under the sea, pirate ships, space and even a spy headquarters. Next, they chose a character to match their setting. It was really exciting because the children could record their own voices for the characters and they could move the characters around. Just by pinching in and out they could even change their character's size. Once they'd finished the three parts of their story, they sat back and watched their cartoon, marvelling at their fabulous film making skills.

### Upcoming Event- VE Day, 8<sup>th</sup> May

Remember that next week is VE day and its 80<sup>th</sup> anniversary. We would encourage you to talk with your child about it and watch some of the special events that are planned to take place on the Bank Holiday Monday, such as the media coverage of the military procession and fly past planned to take place in London. We may be lucky enough to see some of the planes fly over us in Maidenhead, particularly special as some of our roads are named after them.

**On the 8<sup>th</sup> May, we are having a non-uniform day where the children are invited to wear red, white and blue.**

If you have any memorabilia or stories to share, we would love to have them.

### The Alwyn Aims

These are the rules we all try to follow:

- Use kind hands, feet and words
- Say how we feel
- Look and listen
- Always do our best



### Remember to Order Lunches

All school dinners must be pre-ordered by 8am on the day, however, we are finding that if you leave the ordering close to the deadline, the system can throw out an error message. Please try to order the night or weekend before.

Please note that for the Summer term, on Tuesdays and Thursdays, the alternative options will be sandwiches with various fillings or a jacket potato with baked beans.

If your child does not have a packed lunch or you have not ordered a school lunch, they will be given a jacket potato with baked beans.

School lunches for infant age children are fully funded so parents do not pay for them. They are yummy!



Reception children will need their bicycling helmets every Wednesday, if they have one. We do have a few in school but not enough for every child.



Look out for more school news on our Alwyn [facebook page](#) or new [Instagram account](#) @alwyninfantschool. If you haven't already, give us a like and a follow.

# Supporting Your Child's Emotions

Join us to explore ideas and resources to support your child's emotional development and wellbeing in a caring, supportive and non-judgemental space.

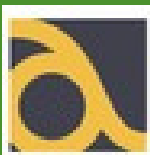
These workshops are free to attend and will be led by Dr Jo Silfi, one of our school's Educational Psychologists.

All parents, carers, childminders are welcome to attend.

Thursday 8th May at 14:15 will be information sharing.

Thursday 15th May at 14:30 will be a question and answer session.

The sessions will take place in Alwyn Infant School and will finish in time for you to collect your child/ren after school.



**achieving  
for children**

**Free sessions in a supportive environment for all.  
Evidence-based with ways to support you and your child.**



# Our Fabulous Parent Teacher Association

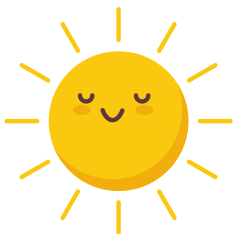
Remember as a member of the school community, you are automatically part of the Parent and Teacher Association (PTA).

They run brilliant events throughout the year but need your help. Please get in touch with them if you wish to take part or have some great ideas to share.



The PTA has been working tirelessly to boost fundraising efforts, and the dedication from the school community truly shines. Through a vibrant mix of events like lively Discos, festive Christmas and Summer Fairs, competitive Quiz Nights, and creative colouring competitions, we've managed to not only raise substantial funds but also bring our community closer together.

The money raised through the PTA is spent by Alwyn and Courthouse on all sorts of things that enhance school life at Alwyn and Courthouse schools. In 2023/24 Alwyn installed a brand new library which the children are absolutely loving. This year, the reception classes had a brilliant fully resourced domestic role play area.



Future Events in the Summer Term Keep an eye out for the amazing events that are being planned for the summer term.

Match funding We have some amazing parents who, through their work, have added to the funds we raise via Match funding; where their company match the amount raised on the event/stall they have helped run. We have had support from Microsoft, Barclays and Heathrow.

Does your company match fund?

<https://www.alwyncourthousepta.com/matchfunding>

**We would like to know what you think! Please fill in this form to share ideas for future events.**

**If you would like to make a donation to the PTA click here. Thank you**



[www.janedouglass.com](http://www.janedouglass.com) [info@janedouglass.co.uk](mailto:info@janedouglass.co.uk) 07393499908



## ***JDFD DANCE CLUB @ Alwyn School***

*Dance Classes for Boys & girls*

*TUESDAYS BEFORE SCHOOL 8.00 – 8.45 am SUMMER TERM 2025*

*Years 1 & 2*

JDFD have been delivering dance and fitness classes for the past 27 years, building confidence & skills in dance and fitness. Dance styles including Street & Creative Dance as well as dance games to develop our dance skills – trust us its really fun!! This club is offered to school years 1 & 2 at Alwyn.

We also run the popular and oversubscribed dance club at Courthouse School and are absolutely delighted to be back at Alwyn for the summer term.

TUESDAYS 8.00 – 8.45am  
29<sup>th</sup> April – 8<sup>th</sup> July (no class half term)

10 WEEK TERM = £80 (£8 per class)

### **PAYMENT & Booking –**

*Please email to register your interest – you will be sent a google form link to book and pay. Payment is in advance of the classes starting by BACS (do contact us if you need to make payment arrangements)  
Places are allocated on a first come first served basis – full payment will confirm the place. All monies paid are non-refundable.*

We offer a range of lovely dance and fitness opportunities for both adults and children so do take a little look at our website [www.janedouglass.com](http://www.janedouglass.com)



## What have Reception been learning this week?

This week in Reception we have been reading Hamada's surprise and tasting tropical fruits. We have looked at where the story is set and started to look at similarities and differences between Kenya and England, focusing on animals, fruit and climate. We have used our phonics to write about fruits we like and animals. We looked at maps and globes.

We were very excited during our PE lesson as we have started learning how to use the balance bikes and understanding how to ride a bike safely. It was great fun and helps to develop our motorskills.

In science we have been finding out about villages, towns and cities as part of our city to sea unit.

**Ask me to sound out the words short and curl.**

**Ask me to write 'A short fork'.**

**Ask me to describe the fruits we tasted.**

**Ask me to count beyond 10.**

**Ask me to tell you the story of the crocodile and the priest.**

Next week we will be getting ready to celebrate VE Day and learning about why peace is so important to our world. We will be learning ow and oi in phonics and continue to develop their subitising skills in Maths.

## What have Year 1 been learning this week?

This week, the children have been continuing to learn about story settings. We've shown them examples of setting descriptions and the children have been using a text map to read a model text.

In maths, we have been counting in 5s and recognising equal groups. In science, we planted sunflower seeds and we're looking forward to watching the plants grow over the next few weeks.

In history, the children looked at household items from the past and compared them to modern day versions. The children will be bringing a piece of history homework that they need to find information on by talking to parents/carers or grandparents.

**Ask me to count in 5s.**

**Ask me to describe things around me on my way to and from school.**

**Ask me to tell you about household items from the past.**

**Ask me to tell you what I used to plant my sunflower plant.**

Next week we are going to be learning all about VE Day and preparing for our VE Day celebrations on Thursday 8th May.

## KEY DATES!

### School Year 2024-2025

#### Summer Term 5, 2024-2025

5th May

Bank Holiday- school closed

8<sup>th</sup> May, VE Day

Non uniform day- wear red, white, blue

8th May, 2.15pm

Parent workshop on emotional development

14th May

Yr1 Trip to Bekonscot

15th May, 2.30pm

Parent follow up on emotional development workshop

16th May

Rabbi visiting Year 1 (RE)

19th May

Parent session on phonics screening check, 2.30pm

20th May, 9am

Parent coffee morning on transition and SEND

23rd May

End of term- normal finishing time

26th-30th May

Half term- school closed

#### Summer Term 6, 2024-2025

2nd June

INSET Day- school closed

6th June

Class group photos- please wear school jumper/cardigan

## What have Year 2 been learning this week?

We had a great start to the week with a Computing workshop from Three Discovery. The children have been very enthused with their animations. Everyone has worked very hard to learn to tell the time to five minute intervals; even when it is tricky they have persevered! You may have heard we had a visit in the night from a Stone Giant, who left footprints and a letter from George - a giant catcher - requesting our help. The children have been inspired to help George by writing some instructions on how to trap the Stone Giant. Finally, in DT we have started to use running stitch to join our fabrics to make a decorative egg cosy.

**Ask me three features of instructions.**

**Ask me to name 5 time words that can be used in instructions.**

**Ask me to name the times when the minute hand is pointing to 12, 3, 6 and 9.**

**Ask me how many minutes are between each number on the clock.**

**Ask me what changes Florence Nightingale made to hospitals.**

**Ask me the diet of a herbivore, carnivore and an omnivore.**

Next week we will be looking at the significance of VE day and celebrating the anniversary with the whole school.

## Congratulations!

Children are enjoying Golden Book Assembly in Year 1 and 2.

In Little Alwyn, they love to have their special stickers and certificate.

A huge '**well done**' to all the children who were in the Golden Book for their achievements this week. **We are very proud of you!**

## KEY DATES!

### School Year 2024-2025

#### Summer Term 6, 2024-2025

9th-13th June  
Phonics Screening Check

11th June  
Year 2 Trip to Wellington Country Park

16th-27th June  
Sports Fortnight

18th June  
National Thank a Teacher Day

24th June, 9.15-11am  
Whole school sports morning with our grown ups

30<sup>th</sup> June, 6pm  
New parents/carers meeting

1<sup>st</sup> July  
Children visit their new classes in Alwyn and Courthouse

10<sup>th</sup> July, 4-5pm  
Grown ups invited to visit classes, new and current

11<sup>th</sup> July  
School reports sent home

17<sup>th</sup> July, 3.30  
PTA Disco for Year 2

22<sup>nd</sup> July, 9.30am  
Year 2 Leavers' Concert to their parents/carers

23<sup>rd</sup> July  
Last day of school, early finish at 1.30pm

# School Day

Year Group	Reception	Year 1	Year 2
Start Lunch Finish →	8.45am 11.45pm - 12.45pm 3.15pm →	8.50am 12pm - 1pm 3.20pm →	8.50am 12.20pm - 1.20pm 3.20pm →

## The School Gates

The Alwyn and Courthouse gates open at 8.40am until 8.55am and 3.10pm until 3.35pm

The opening times allow movement between our two schools and provide different points of access which should help with traffic and parking in our area.

The gate opening times are different from the time your child is required to be in school.

## The Importance of Being on Time

**Reception children need to be in school at 8.45am.**

**Year 1 and 2 children need to be in school at 8.50am.**

The classroom doors will open at these times and close as soon as the last child in the line enters the classroom; this usually takes less than 3 minutes. Any child arriving after the classroom door is shut, will be marked as late. Knocking on the classroom door once it is closed is disruptive to the children as their teacher is having to keep opening the door instead of settling their class for the morning.

Please be on time every morning. It can be worrying for a child to enter a classroom late especially when their classmates are sat on the carpet ready to learn. All children should have come into school, put their belongings in the cloakroom, their book bag in their drawer and their water bottle in the tray and have been registered before 9am each morning.

## Attendance Matters

Being in school every day is extremely important for all children in order to receive the best possible start to their learning. Your child's attendance is vital to a successful education, as this is the foundation for lifelong learning. Lessons are planned in sequences and if a child misses a part of this sequence, they are at a disadvantage when it comes to committing that learning to long term memory.

If your child is slightly under the weather, but well enough to come into school, send them in and mention it to the class teacher. They will keep an eye on your child and phone you if there are any concerns.

## Reason for absence

Please let the office know the specific reason for your child's absence rather than feeling unwell or ill. This helps us monitor any small outbreaks of similar virus' and supports the recording of absence.

## Medical Appointments

If you have a medical appointment during the school day, inform the school before the appointment and provide a GP/Hospital appointment card or letter.

## Leave Requests

Holidays during term time will not be authorised. Any other exceptional circumstances will require supporting evidence that shows the child has to attend something that results in missed school days.

Fixed Penalty Notices (fines) may be triggered if your child misses 5 consecutive days of school or 10 sessions in 10 weeks. A session means a morning or afternoon, not a day.

Please ensure that you make all reasonable efforts to send your child into school.

# Penalty Notice Changes

With the introduction of the new National Framework for Penalty Notices on 19 August 2024 there are significant changes in the way that Penalty Notices are to be issued and an increase in the charges associated with them. These are nationwide changes implemented for consistency across all Local Authorities.

Term Time Leave is only allowed in exceptional circumstances communicated in advance with evidence provided as soon as possible to the Headteacher.

## First Offence

For the first time a Penalty Notice is issued for unauthorised term time leave or irregular attendance the amount will be;

-£160 per parent per child paid within 28 days.

-Reduced to £80 per parent if paid within 21 days.



**Please ensure you communicate all absences for your child to school.**

## Second Offence

Within 3 years of the first offence.

The second time a Penalty Notice is issued for unauthorised term time leave or irregular attendance the amount will be;

-£160 per parent per child paid within 28 days.

-No reduction for early payment.

## Third Offence Onwards – Within 3 years of the first offence

The third time an offence is committed for unauthorised term time leave or irregular attendance a Penalty Notice will not be issued and the case will be presented straight to the magistrates court. Fines can be around £2500 per parent, per child. Cases found to be guilty in the magistrate's court can show as a criminal record.

## Notices to Improve

A Notice to Improve is a final opportunity for a parent to engage in support and improve before a penalty notice is issued. If the national threshold has been met and support is appropriate but offers of support have not been engaged with by the parent or guardian or have not worked, a Notice to Improve should usually be sent to give parents or guardians a final chance to engage in support. A Notice to Improve does not need to be issued in cases where support is not appropriate and an authorised officer can choose not to issue one in any case, including cases where support is appropriate but they do not expect a Notice to Improve would have any behavioural impact (because the parent has already received one for a similar offence).

If sufficient improvement is not made following the service of a Notice to Improve, a penalty notice may be issued either during or at the end of the designated time period.

## Don't forget.

Penalty Notices are issued Per Parent, Per Child.

For example 3 siblings absent would result in each parent receiving 3 fines. This could amount to £960

## DfE Blog for Parents

<https://educationhub.blog.gov.uk/2024/02/29/fines-for-parents-for-taking-children-out-of-school-what-you-need-to-know/>



## 10 sessions in 10 weeks

Penalty Notices will be considered for any 10 sessions of unauthorised absence in 10 weeks. **5 Consecutive days** of term time leave can trigger a Penalty Notice

[Link](#) to the attendance page on the Alwyn website.



Providing Children's Services for the Royal Borough of Windsor and Maidenhead

## Attendance Ladder

How close is your child to reaching the top?



For every day your child is absent from school, over 6 hours of instructional time is lost.



# ARKING RESOLUTION

## Driving, Parking and Vehicles in Mulberry Walk

Please think about our neighbours and school community, especially as one of our school values is kindness. Drive and park carefully and considerately on the roads surrounding the school at all times.

The road gets very busy at drop off and collection times. To help with this, we have an unofficial one way system that keep cars moving safely. Please reduce your speed and drive slowly around the one-way system. This is crucial as there are very young children walking along the pavements who may not be seen easily while driving, especially in these grey days.

We have good relationships with our neighbours but that can only be maintained with your help. Please do not block their driveways when parking and remain polite if they ask you to move. Any area with block paving is for the residents of the road and not for school parking or access.

Please do not park on the bends of the road or directly opposite another car as this can stop the flow of traffic and make it difficult for other drivers to pass.

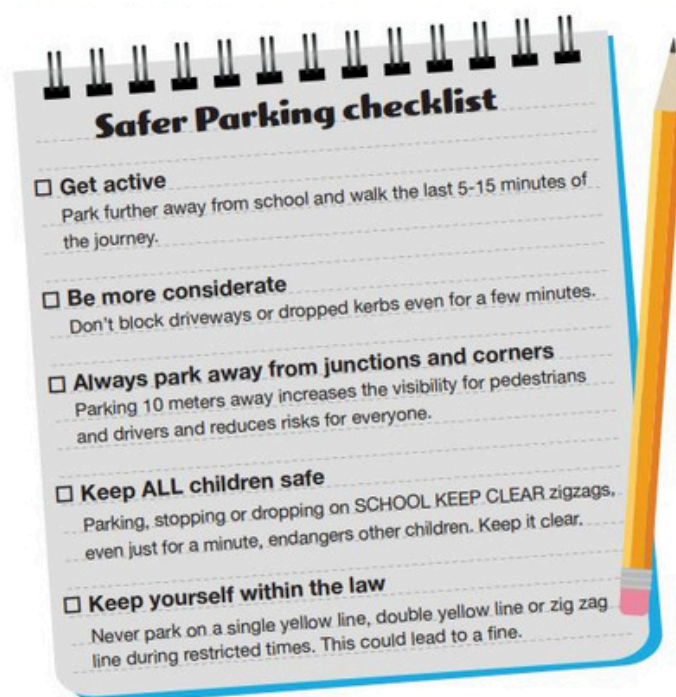
Do not mount the curb as our children and their siblings are very little and not always easy to see.

### To ease congestion, please explore other options:

- If you are able to walk or cycle to school this would help.
- Consider parking further away, such as by Courthouse Junior School, where there are more roads to park along safely and they tend to be less congested.
- A short walk can make a significant difference in reducing traffic and ensuring safety and you can access Alwyn by walking through Courthouse as the gate opening times are the same.

Recently we've had a few reports of members of our school community driving along the pavement, on the bend, at speed resulting in near misses as well as some aggressive behaviours when they have been reminded of our parking etiquette.

Aggressive driving and behaviours put us all at risk and should be reported by calling 101.



**Share the roads, Share the responsibility**



## Community Pages: What is happening in our local area?

**Community Events Disclaimer:** Please note that the events listed are organised by external parties and are not endorsed or recommended by Alwyn Infant School. We provide this information as a courtesy to our community. We advise families to exercise their own discretion and judgement when participating in any events or activities.

**GEMS**  
Autism & ADHD Support Service  
East Berkshire



# Bearcubs

## Ages 5 to 10

First and third Monday of the month - 4pm to 5pm

**7th April** - Lego Fun - Dedworth Library, Windsor  
**21st April** - Easter Monday - No session  
**5th May** - May Bank Holiday - No session  
**19th May** - Big on Bouncing - Slough (fee applies)  
**2nd June** - Story Time - Langley Library  
**16th June** - Picnic in the Park - Bracknell

*\*Please note activities may be subject to change*

**Registration:**  
Gems.4Health@nhs.net  
0800 999 1342

**Criteria:**  
Children with or likely to have  
ADHD and/or autism and  
living in East Berkshire



For more information: Call 0800 999 1342 or visit [www.Gems4Health.com](http://www.Gems4Health.com)

**GEMS**  
Autism & ADHD Support Service  
East Berkshire

01753 373 244 / 0800 999 1342  
weekdays 9am to 5pm

<https://www.gems4health.com>

[gems.4health@nhs.net](mailto:gems.4health@nhs.net)

GEMS is for children and young people who are diagnosed with, or who may have, autism and/or attention deficit hyperactivity disorder (ADHD). The service also supports parents and carers and is open to anyone living in Slough, Royal Borough of Windsor and Maidenhead or Bracknell Forest.


### UPCOMING WORKSHOPS AND COURSES

**ADHD Course** - Monday 28th April, 12th & 19th May - 7 to 9pm  
**Sensory Processing** - Wednesday 23rd April - 7 to 8:30pm  
**Managing Anxiety** - Wednesday 23rd April - 10am to 12noon  
**Empowering Calm** - Wednesday 7th May - 10am to 12noon  
**Autism Course** - Thursday 8th, 15th & 22nd May - 7 to 9pm  
**Girls and Autism** - Tuesday 10th June - 10am to 12noon  
**Sleep - Autism and ADHD** - Tuesday 17th June - 7 to 9pm  
**Adolescence** - Wednesday 2nd July - 10am to 12noon

Visit our website to book your space - [www.Gems4Health.com](http://www.Gems4Health.com)



[www.rbwml.gov.uk](http://www.rbwml.gov.uk)




Royal Borough of Windsor & Maidenhead


# Boyn Grove Library



## Drop in children's chess club sessions

### Saturdays

### 1.30pm to 3pm





@RBWM\_Libraries  RBWM Libraries  RBWM\_Libraries

# It all starts with...



**We all play at:**  
Boyne Hill Cricket Club

**Session dates:**  
Saturday 10th May- Saturday 28th June

**Session timings:**  
9:30am-10:30am

**Contact:**  
Jack Spencer-Jones- 07595463584,  
[jackspencerjones@yahoo.co.uk](mailto:jackspencerjones@yahoo.co.uk)



Sign up today at  
[allstarscricket.co.uk](http://allstarscricket.co.uk)

Click here for more information